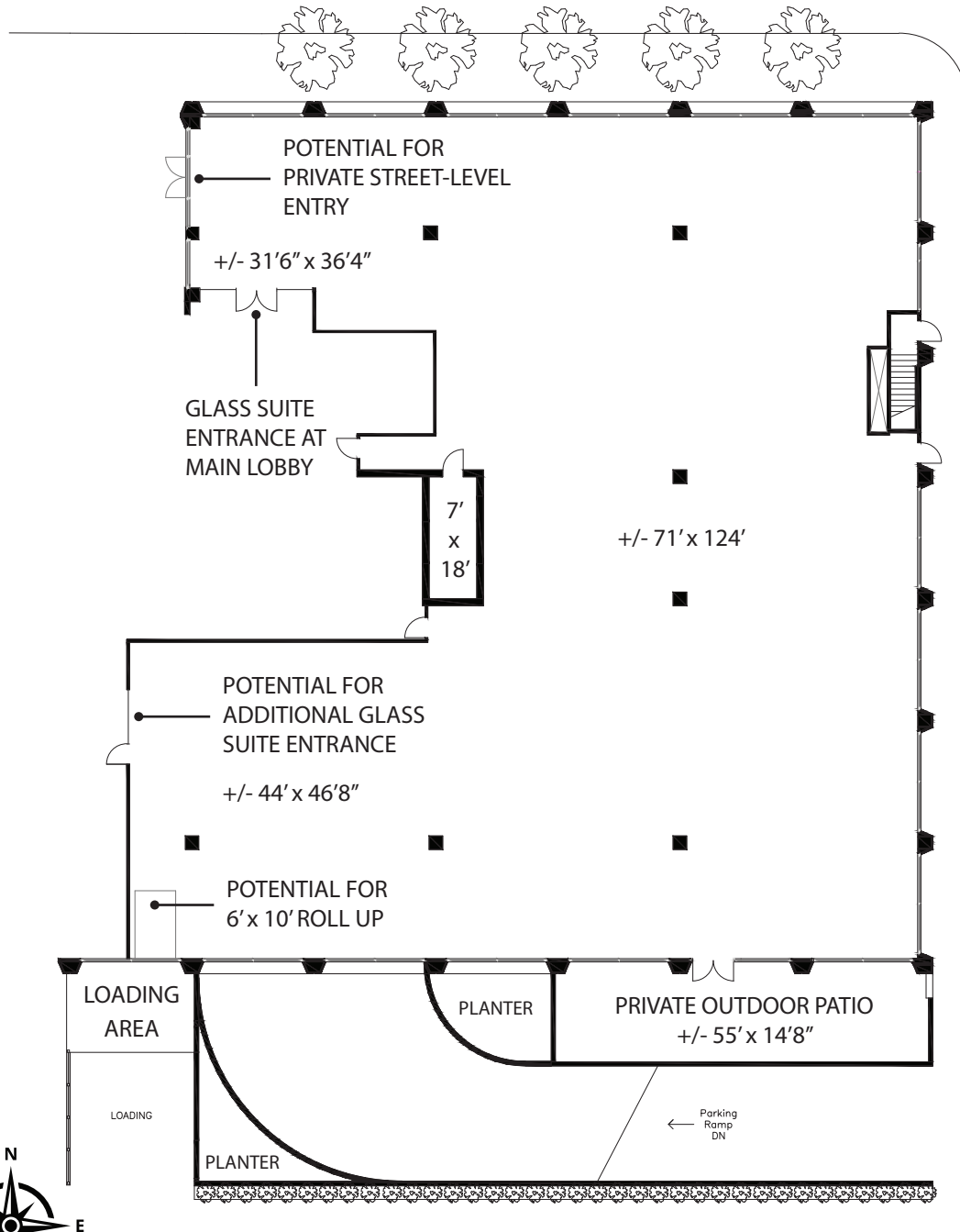


KEY PLAN



- SOARING 14' WINDOWS ON 3 SIDES
- PROMINENT GLASS SUITE ENTRANCE AT MAIN LOBBY
- POTENTIAL FOR PRIVATE STREET-LEVEL SUITE ENTRANCE
- POTENTIAL FOR 6' x 10' ROLL-UP DOOR AT LOADING AREA
- PRIVATE OUTDOOR PATIO FOR EXCLUSIVE USE
- TALL 16' HIGH CEILINGS

**1st Floor
Suite 110**
15,370 RSF



Built to
EVOLVE



795

With inspiring
SPACES